

ENGAGED
TEACHERS



INSPIRED
STUDENTS

METHODS

Environment Implementation Services
Choice leads to ownership.

“Over 70% of change initiatives fail...*”

*Claude Colles and David Leonard (2013, Mar. 4). Most Change Initiatives Fail - But They Don't Have To. <http://www.gartner.com/businessjournal/162707/change-initiatives-fail-don.aspx>

...luckily, we're an outlier.

Environment Implementation Services are designed to *prepare* and *support* educators as they seek to leverage their new learning environments. METEOR provides training and coaching of instructional best practices needed to accomplish this. All services address **Student Engagement in 21st Century Learning Environments** and focus on one or more of the following key components: *Cognitive Engagement, Social-Emotional Engagement, Behavioral Engagement, and/or Physical Engagement.*

BEST PRACTICES MEET INNOVATIVE ENVIRONMENTS



Above is an example of modern furnishings set up in a traditional classroom. Desks are all oriented in one direction and facing an instructor's station and whiteboard.



In the learning space shown above students have options for where they would like to learn. The variation of heights, small group settings and mobility, to orient groups as needed, allows for comfortable, efficient learning.

How am I going to train and deploy my staff?

What are my biggest concerns regarding putting in these High-impact Learning Environments?

When do I anticipate having access to my staff to begin preparing them for their new learning environment?

What percentage of my new staff is coming in well versed in the use of High-Impact Learning Environments?

Active teaching and **learning** increases retention by 50%. Active classrooms increase attention spans even after lunch. Inquiry-based Learning in **High-Impact Learning Environments™** can increase learning outcomes by 20% or more, resulting in increased **learning retention, attention span, student proficiency** and **test scores**.





When we **discover** current needs and consider future possibilities, we **support** and **accelerate** learning experiences for **students** and **teachers**.

METEOR SPACES MODEL

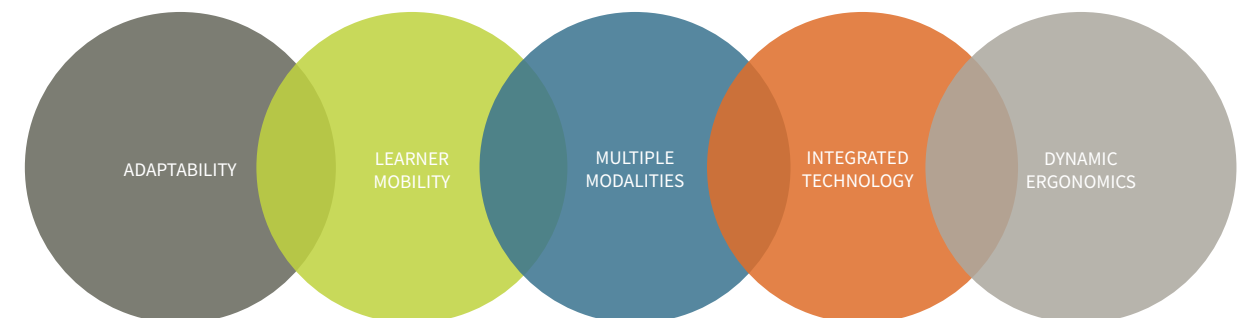


“ Learning is connected to emotion and when you change a setting it allows students to learn in different ways on different days.* ”

Jolette McDonald from Brevard County Schools is highly regarded for her success with students, especially those who struggle with mathematics. After winning several awards, she knew there was something missing and inquired "How many more awards do I need to win to get [new] furniture for my classroom?"

Soon after, the existing furniture was replaced and her students were "**able to work more collaboratively.**" Now they could organically work together and ask questions. In her class, Florida Standards Assessment scores went from **51% to 84% after implementing best learning and space design principles.**

FOUNDATIONAL SPACE DESIGN PRINCIPLES



METEOR LEARNING MODEL



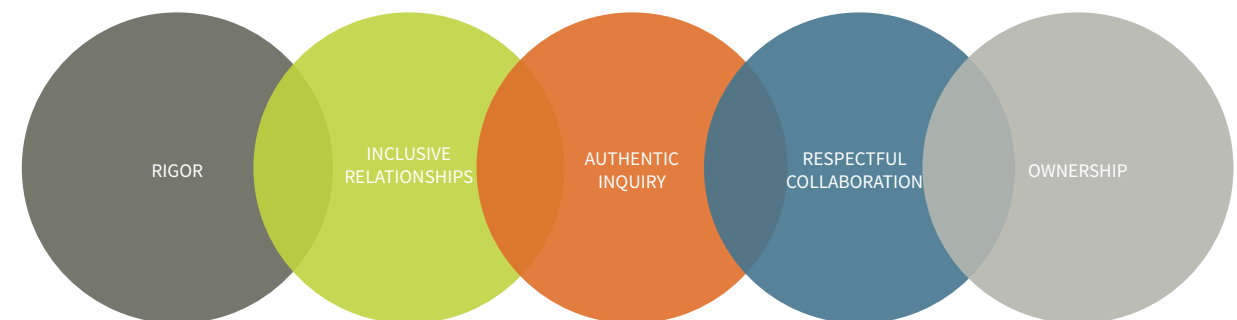
*Cambria, Jenna Guthrie, "John T. M. ... ing and Engaging Students in ... eading." The NERA Journal University of Maryland (2010), Volume 46(1)

“Students tend to work harder for teachers they like and put little effort into classes where they feel disconnected and misunderstood.*”

A repeated theme in our success stories is students feeling **empowered** and **engaged** through the ability to decide when and how they learn best. These choices result in a sense of **ownership for learning**, leading to confidence and making it more likely for learners to push through tougher tasks.

This newly discovered foundation connects students through a common experience and pride of school, resulting in relationships which enhance **collaboration, communication, critical thinking,** and **creative thinking.**

FOUNDATIONAL LEARNING DESIGN PRINCIPLES



ENVIRONMENT IMPLEMENTATION SERVICES

Educational Services for Pre-Installation: Prepare Your Teams for Tomorrow's Environment

Purpose: These options are intended as readiness support services to prepare districts/schools **prior to the installation of the new learning environment**. The following are options to choose from based on your district/school needs:

Option One for Ed Services for Pre-Installation: Materials and Support for New Thinking & Conversations with your Team: *Humanizing the Education Machine: How to Create Schools that Turn Disengaged Kids into Inspired Learners* and companion Thinking Guide (Book co-authored by Rex Miller, Bill Latham, and Brian Cahill). Choose from one of the following offerings:

- Materials Only (Book/Thinking Guide Combo):** to be used to lay a strong foundation, armed with solid research and a clear roadmap for a whole new pathway (profoundly human approach) to learning. Based on research over a two year period and across the country, learn about the best practices of student engagement and future-ready learning found throughout America from at-risk communities to progressive and prosperous communities. This is a powerful tool for discussion, reflection, and action planning as teams think about student engagement through leveraging new learning environments. Suggested audiences include Professional Learning Communities, interdisciplinary teams, grade levels, departments, administrators, instructional coaches, parents, and community members.

- Launch Party:** Book and Thinking Guide **PLUS** six 1-hour remote sessions with a Meteor consultant as an outside expert to answer questions from the group.

- Launch Party with the Author:** Book and Thinking Guide **PLUS** one 1-hour remote session with one of the authors of the book.

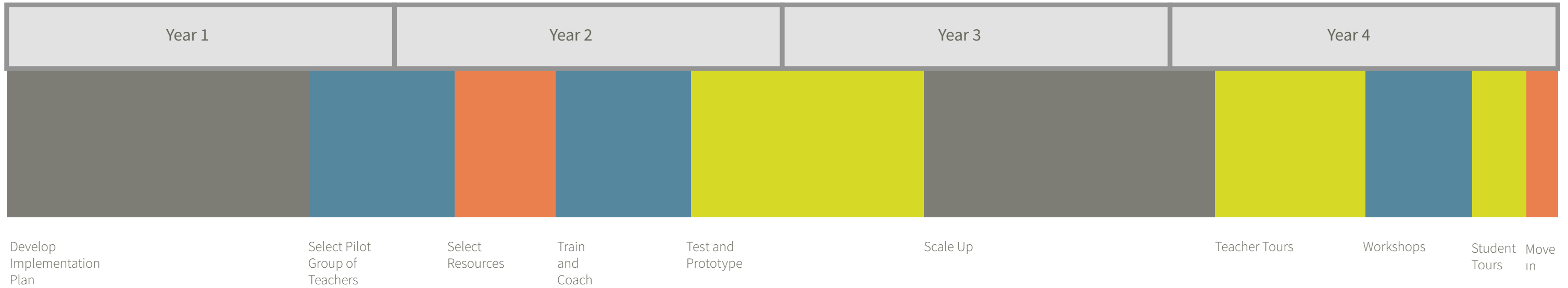
- Meteor Global Connections:** Book and Thinking Guide **PLUS Live webinars** that connect you and your district/school with other educators across the country.

Option Two for Ed Services for Pre-Installation: Onsite, Tailored Readiness Support Services: To Determine Gaps and Priorities

- Instructional Rounds** – Meteor Educational Consultant(s) and district/school leadership visit classrooms with specific look-fors, which can include instructional best practices, interaction of teacher and students, interaction of students and students, and how current space is being leveraged for instructional purposes and student collaboration. The purpose of these classroom visits is to identify areas of strength to capitalize upon; note gaps observed for possible support and coaching; and then meet with the leadership team to discuss findings to tailor an action plan focused on one to two priorities for the second day of service (Educational Services for Post Installation).



User Engagement Timeline



Option Three for Ed Services for Pre-Installation: Onsite, Tailored Readiness Support Services: Mini-Summit Training to Connect Instructional Best Practices to new Learning Environment

•**Mini-Summit:** Training session(s) focused on instructional best practices for student engagement and collaboration with suggestions for how to prepare teachers and students for the new learning environment. Participants will leave the session with one to two deliberate actions to put into place immediately even before the new environment is installed.

•One, 3.5 hour interactive session where consultant models instructional best practices **PLUS** choose from one of the two options for the second half of the day:

- Session repeated for a different targeted group to ensure that groups are small enough to engage in meaningful conversations. **OR**
- Consultant meets with leadership and instructional coaches and/or teacher leaders following the morning session to discover next steps and priorities for the Education Services Post- Installation day.

“I loved the training provided! It was so practical and encouraging. Thank you!”

Learning Outcomes for Mini- Summit session(s):

- Understand the rationale and need for a *culture shift* in instructional practices and student experiences to be a future-ready school.
- Understand the components of *Student Engagement* (cognitive, social-emotional, behavioral and physical) and the implications for designing student experiences within the new learning environment.
- Introduce teachers and leaders to pragmatic strategies for increased rigorous, collaborative teaching and learning that helps to break the mindset of “kids in rows” mold.


ENVIRONMENT IMPLEMENTATION SUPPORT

Education Services for Post- Installation: Onsite, Tailored Training & Coaching for Effective Use of Your Learning Environment

Purpose: After your new environments have been installed the focus of support is on coaching and modeling instructional best practices to clearly show how to leverage them for student engagement and collaboration. Choose from one of the following options:

Option One for Ed Services for Post-Installation: Onsite, Tailored Training & Coaching for Effective Use of Your Environment

- Training and Support within the new learning environment (training would occur in a classroom with the new furnishings.) Choose from one of the following offerings:
 - Full day session (6 hours or 7 hours if lunch is included) Sessions are designed to provide information and modeling in the morning and then application of new learning in the afternoon. Participants will use authentic work to plan for an upcoming lesson within the new learning environment.
 - Half day session (3.5 hours) PLUS one of the following additional options:
 - Session repeated for a different targeted group to ensure that groups are small enough to engage in meaningful conversations. OR
 - Half-day coaching and support—Consultant meets with selected teachers or teachers who “opt-in” during the second half of the day for customized classroom support.



“My staff moved from being scared to write or move the furniture to valuing everything about the furniture!”

Option Two for Ed Services for Post-Installation: Onsite, Tailored Training & Coaching for Effective Use of Your Environment

•Full day (6 hours or 7 hours if lunch is included) coaching and support of selected teachers or teachers who “opt-in” in their respective classrooms or common areas. Teachers are selected prior to the day of service so that the Educational Consultant can engage in a phone conversation to discuss the student experience(s) planned for that day and the type of coaching/support desired.

NOTE: For maximum impact, it is highly recommended that a training session has been provided during the Ed Services Pre-Installation Day.

**Choose from the following Possible Topics for Education Services:
Post-Installation Days or Let Us Create a Customized Experience for you!**

•Don't Take Off the Wheels: Mobility for Differentiation and Personalization

Modern mobile furnishings are designed for differentiation and quick transitions. Avoid classroom management challenges and maximize learning by design.

•Write On It! Best Practices for Writeable Surfaces

Writeable surfaces are designed for collaborative learning and just-in-time coaching. Avoid distracted doodles and use surfaces for shared problem solving.

•Shape Shifters: Intended Uses for Modern Furniture Designs

Why are those desks shaped differently? Use your new environment according to best-fit design for collaboration, inclusion, and real-world inquiry.

•Furnishings First: Making Sense of Modern Environments

Pragmatic best practices for modern learning environments.

•Using the Environment to Support Effective Accountable Talk and Rigorous Peer Coaching

Moving from whole-group sessions to accountable talk configurations and small-group peer coaching for deeper learning.

•Text, Talk, and Task: Three Environments, One Classroom, Deeper Inquiry

How to support individual, paired, and small group learning routines in flexible classrooms for accelerated comprehension.

•Integrating Whole-group, Individual, Small Group and Technology-centered Learning for Critical Thinking

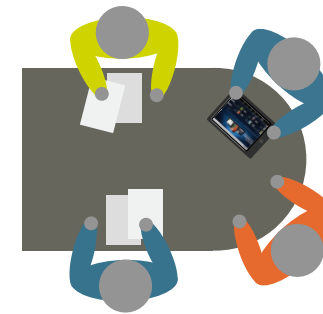
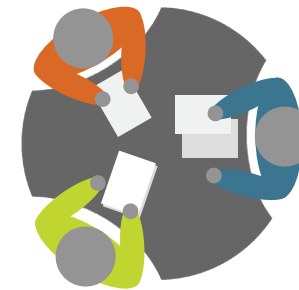
Effective Integration of multiple learning environments in one classroom to support deeper critical thinking and problem solving.

•Media Center: Common Areas for Uncommon Learning

Modernize your media center to create spaces which attract students and encourage collaborative learning.

•Media Center: Sell Learning with Help from Retailers

Drawing from retail best-practices, use media center environments to promote student engagement and real-world inquiry.



METEOR also tailors and provides more specialized support to meet your specific needs including support in the following areas:

•**Curricular Focus Areas:** We tailor these topics to your curriculum or instructional focus areas for connected learning.

•**Exceptional Spaces for Students with Exceptionalities:** Global experts in the field support your teachers in exceptional learning environments.

•**Modern Media Centers:** Library and Media Center experts help you design award-winning common learning spaces.

•**The Learning Café:** Maximizing student satisfaction and learning opportunities in the school cafeteria or café.

•**Leader to Leader:** Aligning Leadership and the Learning Environments (Specialized topics for leadership teams.)

For more information, let us schedule a time to meet with one of our METEOR Education™ Experts to design a tailored approach for you!



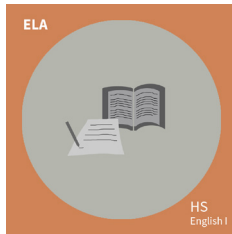
ENVIRONMENT IMPLEMENTATION SUPPORT

METEORCONNECT.COM



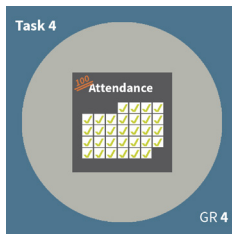
Educational Resources

With METEOR Connect™ Educational Resources, educators gain access to an exhaustive set of resources and webinars. Our content is based on the very latest research and is created by thought leaders at the forefront of modern teaching and learning.



Short Webs

Short-form webinars on instructional best practices and other relevant topics.



Performance Tasks

Collaborative task-based projects for use in your collaborative environment.

Discussion Guides

Expand the visionary thinking and practices of your teacher PLCs.

STEM MEAs

Model Eliciting Activities to engage students in real-world STEM problem solving.

Tips, Trick and Training

How to use your new environment for a “best fit” to your curriculum.

Meet Your Learning Experience Coordinator

At METEOR our High Impact Learning Experience™ Coordinators are archeologists, working alongside you to carefully uncover your unique challenges as you prepare to move into your new environment. Creating a service plan that is tailored to your specific needs will ensure your educators are **ready to fully utilize their environment**.

By installing a **High-Impact Learning Environment™** you have taken a big step towards a world-class, 21st century education. *Your school may be future-ready but are your teachers?*

We can help.

Our Learning Environment Specialist can assist you in taking the next step with our team and begin your path to Discovery.

“I would love to get you guys in to see how productively my students are collaborating. Your furniture has solidified the professionalism in our classroom. My students and I asked the question last year, 'Should a classroom contain students or inspire students?' Obviously, we chose INSPIRE, and your furniture has rolled us right into that mindset!”



800-699-7516
meteoreducation.com
info@meteoreducation.com
@meteoreducation

